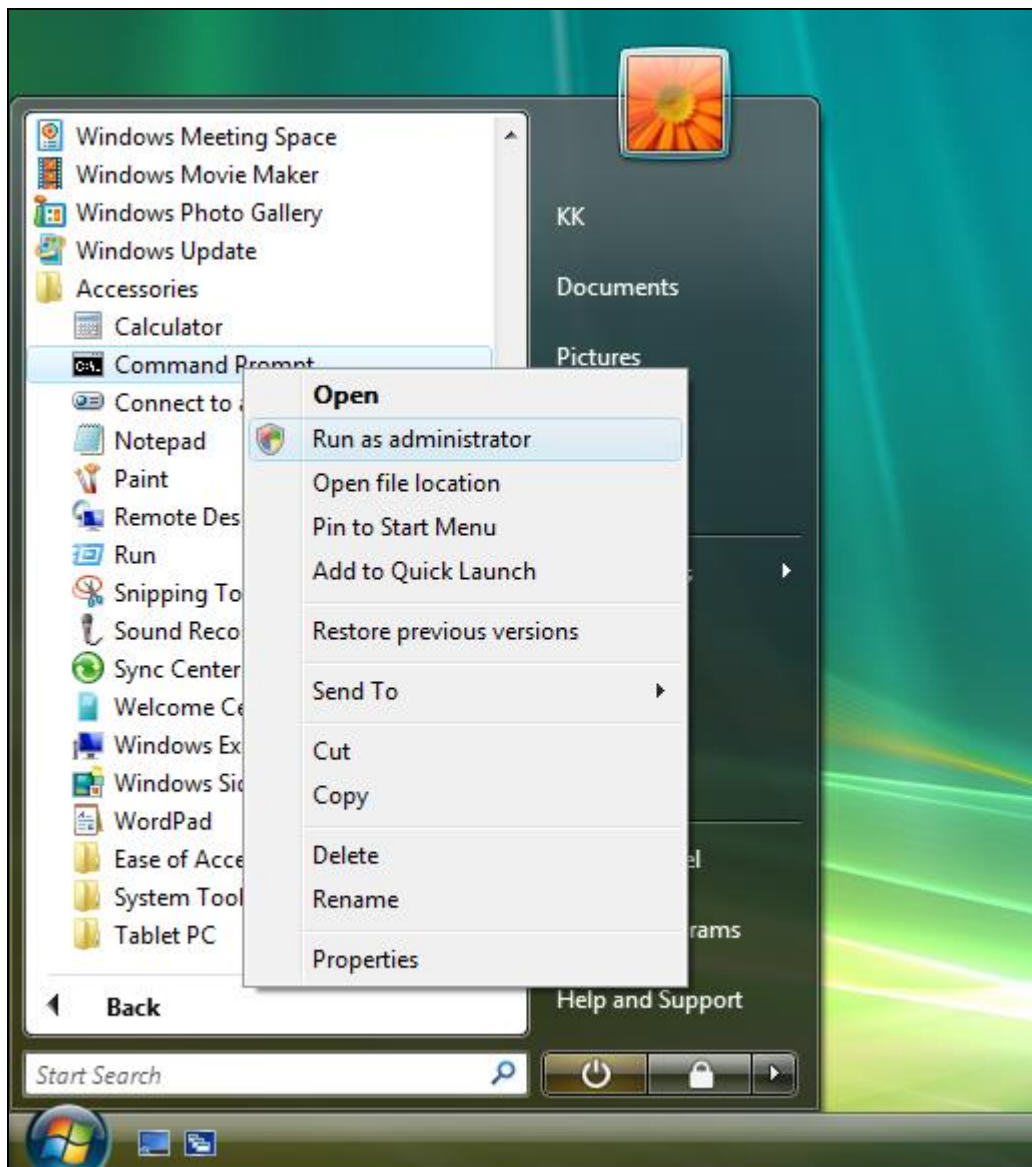


## In [Windows Mode]

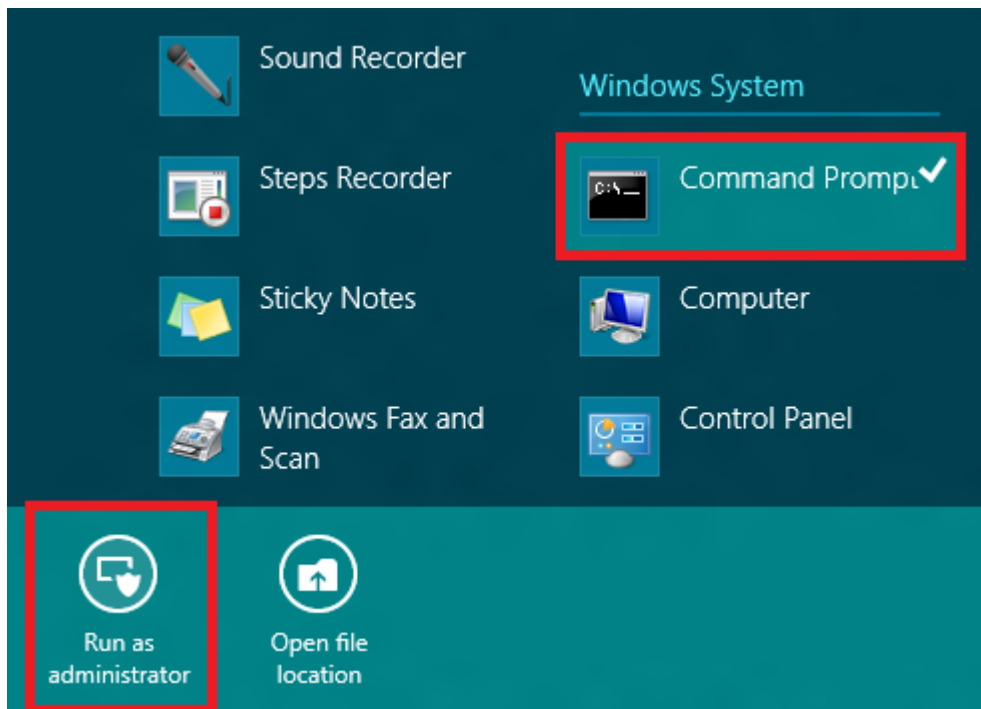
- 1.1 Get Acer BIOS Package.
- 1.2 Copy "WIN" and "ROM" folders including files to a storage device.
- 1.3 Power on System and press <Del> during POST LOGO to entry BIOS setup.
- 1.4 Set [Authentication]->[Secure Boot ]->Disable.
- 1.5 Press <F10> or select [Exit]->[Save & Exit Setup] to save changes.
- 1.6 Boot to Windows.

### [By Windows command line](#)

2. Run Command Prompt as **Administrator** in Windows.  
<Windows 7>



&lt;Windows 8&gt;



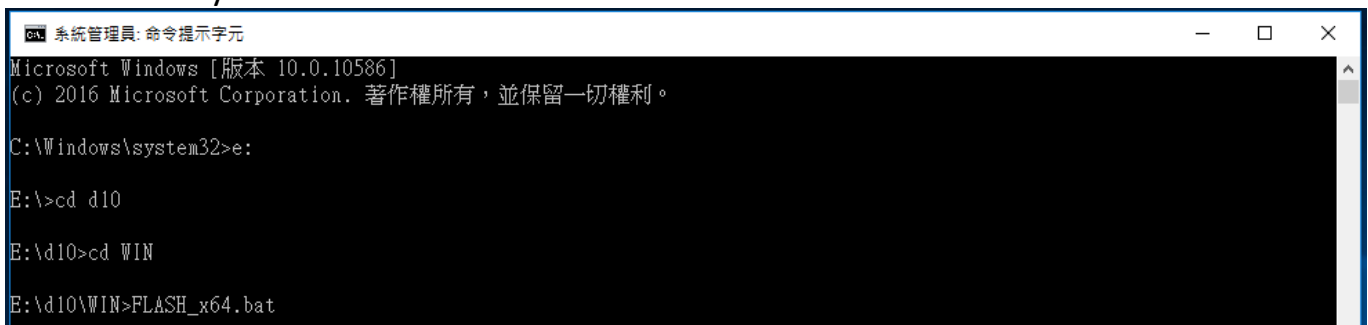
## Windows

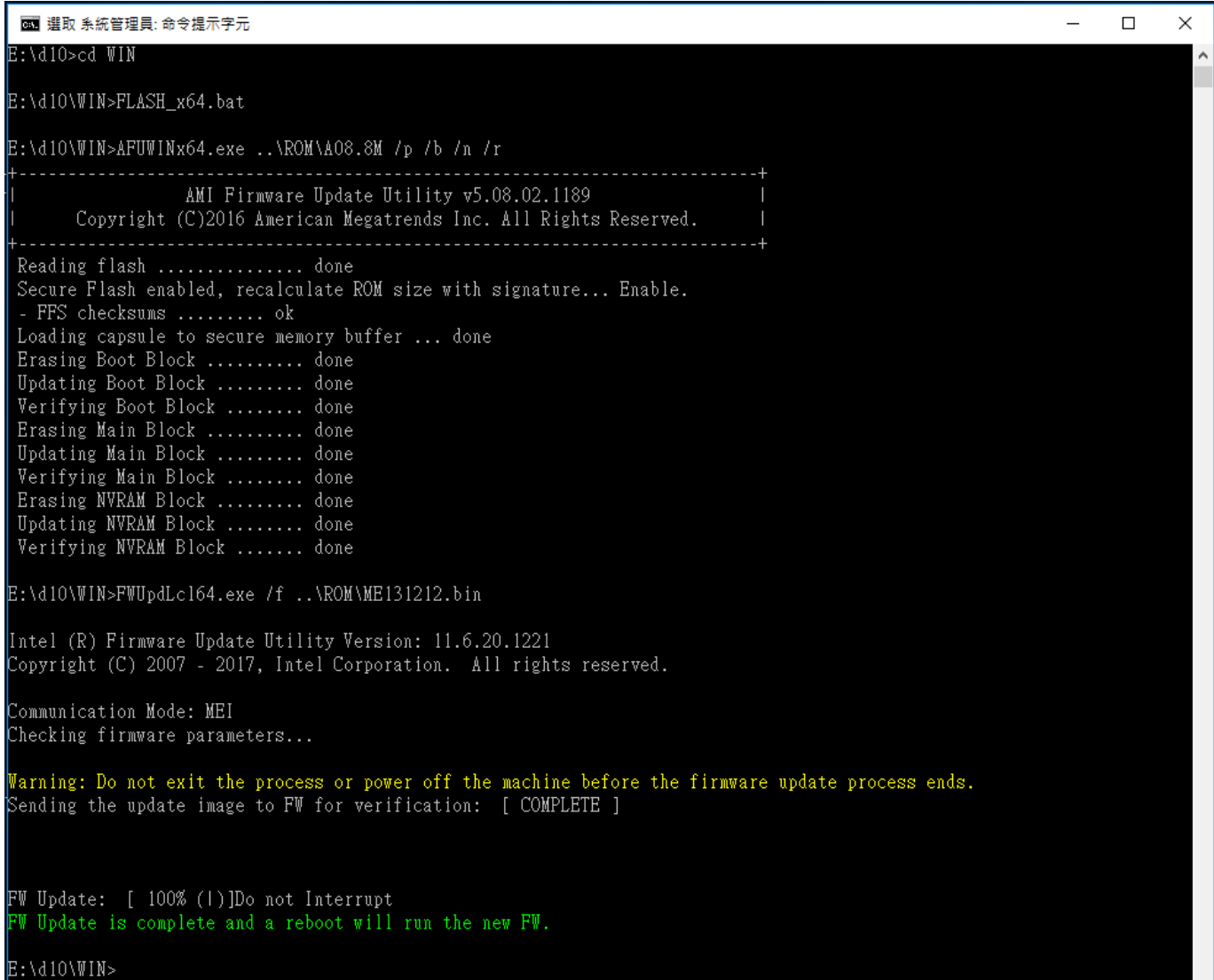
### 2.1 Key in 'cd win' (Go to BIOS path, e.g. "E:\D10\WIN")



2.2a. Key in 'flash.bat' or 'flash' for 32-bit Windows and following pictures are reference only.

b. Key in 'flash\_x64.bat' or 'flash\_x64' for 64-bit Windows and following pictures are reference only .



**2.3 Press <Enter> and start to flash System BIOS and ME Firmware.**

```
cmd 進取 系統管理員: 命令提示字元
E:\d10>cd WIN
E:\d10\WIN>FLASH_x64.bat
E:\d10\WIN>AFUWINx64.exe ..\ROM\A08.8M /p /b /n /r
+-----+
|          AMI Firmware Update Utility v5.08.02.1189          |
| Copyright (C)2016 American Megatrends Inc. All Rights Reserved. |
+-----+
Reading flash ..... done
Secure Flash enabled, recalculate ROM size with signature... Enable.
- FFS checksums ..... ok
Loading capsule to secure memory buffer ... done
Erasing Boot Block ..... done
Updating Boot Block ..... done
Verifying Boot Block ..... done
Erasing Main Block ..... done
Updating Main Block ..... done
Verifying Main Block ..... done
Erasing NVRAM Block ..... done
Updating NVRAM Block ..... done
Verifying NVRAM Block ..... done

E:\d10\WIN>FWUPdLcl64.exe /f ..\ROM\ME131212.bin

Intel (R) Firmware Update Utility Version: 11.6.20.1221
Copyright (C) 2007 - 2017, Intel Corporation. All rights reserved.

Communication Mode: MEI
Checking firmware parameters...

Warning: Do not exit the process or power off the machine before the firmware update process ends.
Sending the update image to FW for verification: [ COMPLETE ]

FW Update: [ 100% (1)]Do not Interrupt
FW Update is complete and a reboot will run the new FW.

E:\d10\WIN>
```

**2.4 Reboot system and Press <Del> to enter BIOS setup menu.****2.5 Select [Load default setting], then [Save & Exit Setup].**